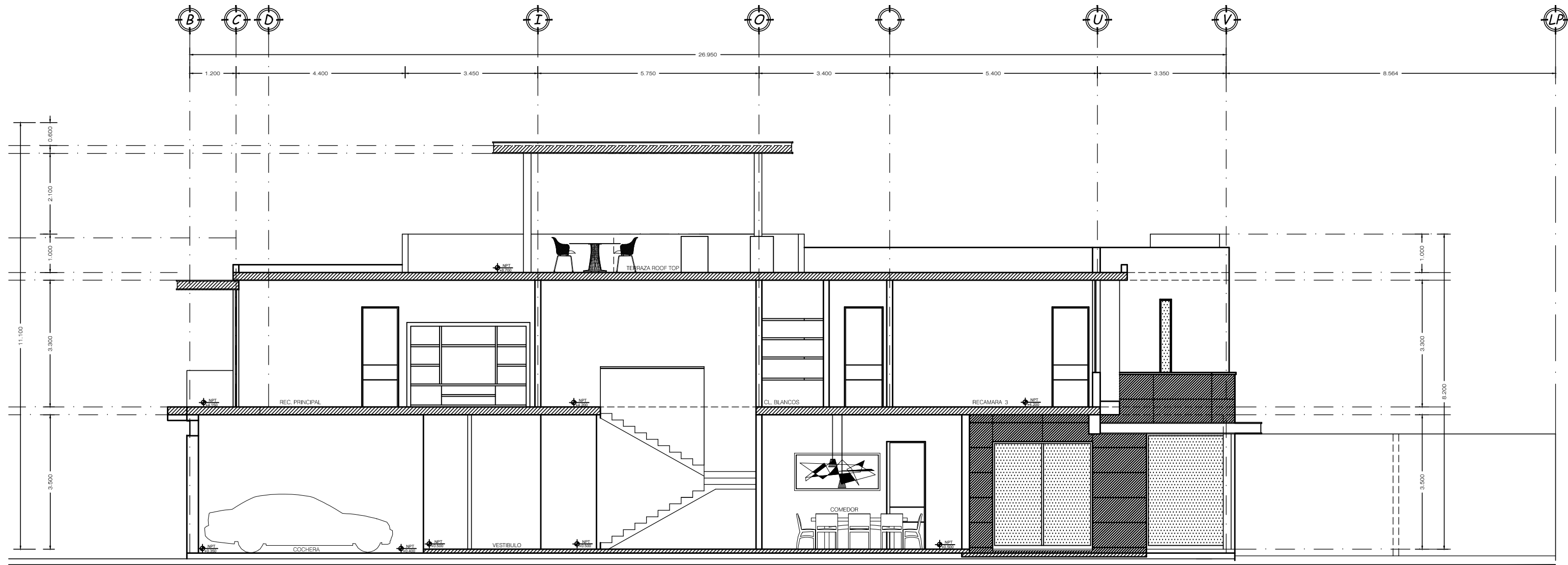
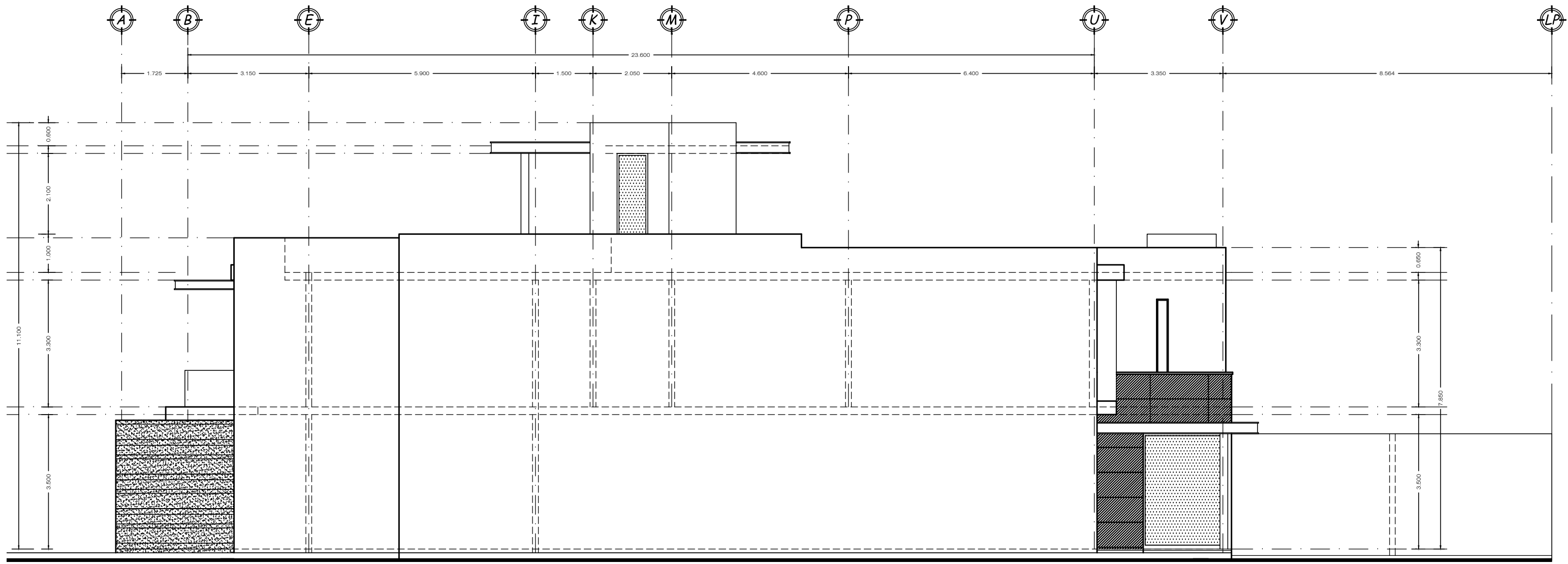


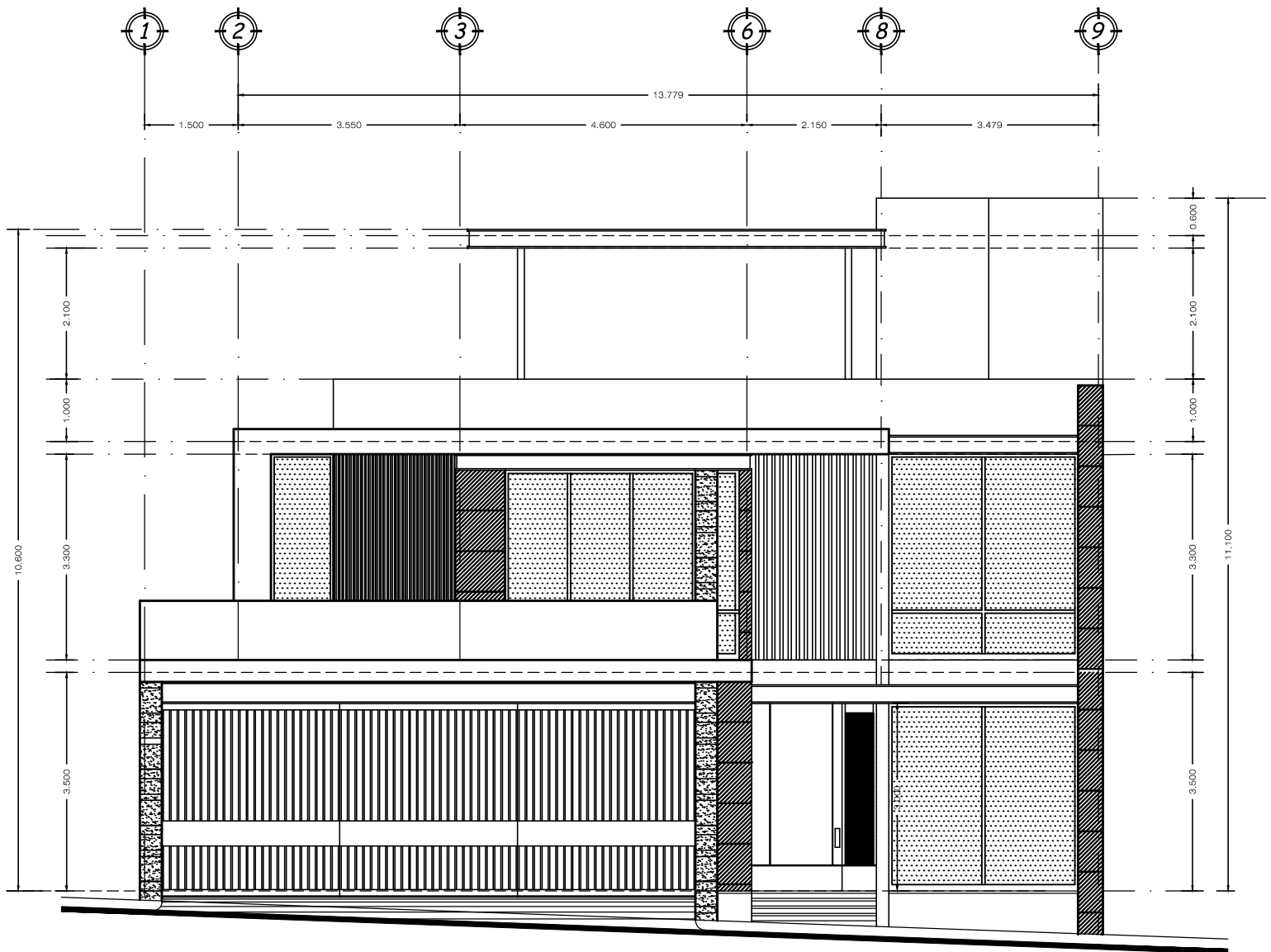
FACHADA PRINCIPAL ( SUR )



CORTE LONGITUDINAL A - A'



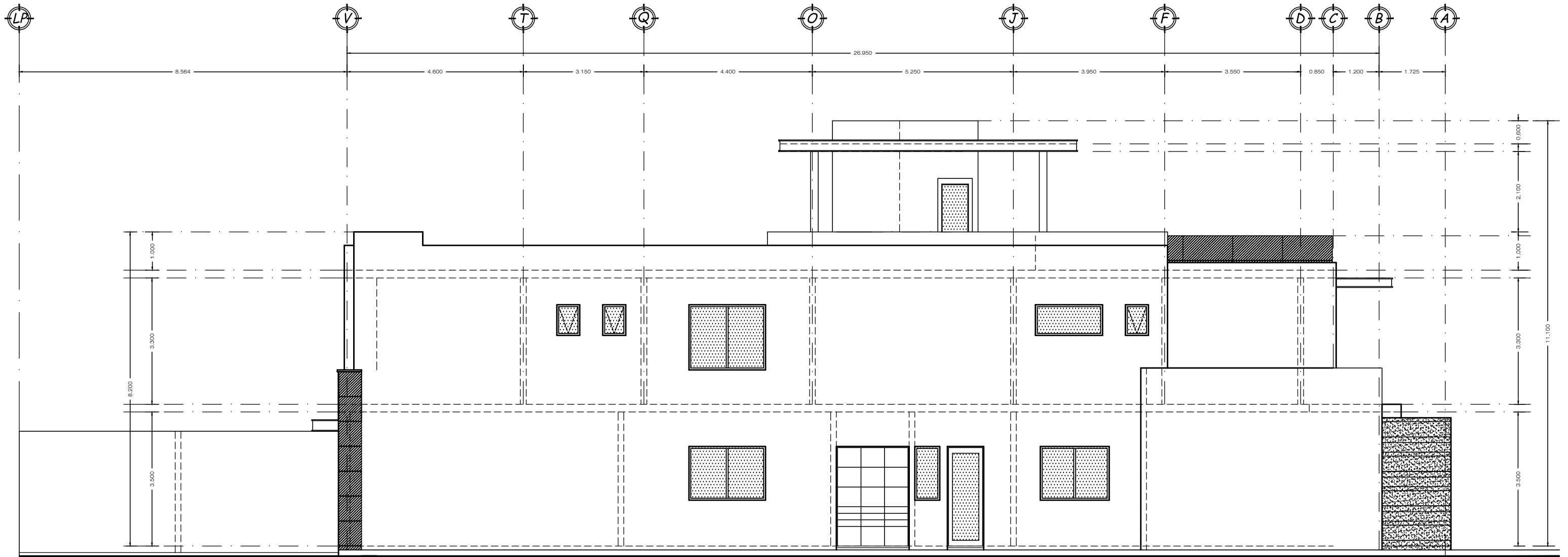
FACHADA LATERAL IZQUIERDA (ORIENTE)



FACHADA PRINCIPAL ( SUR )



FACHADA POSTERIOR ( NORTE )



FACHADA LATERAL DERECHA (PONIENTE)

